

Constellation VCM™

Video Content Management, perfected.

manage | share | search | retrieve | archive | protect





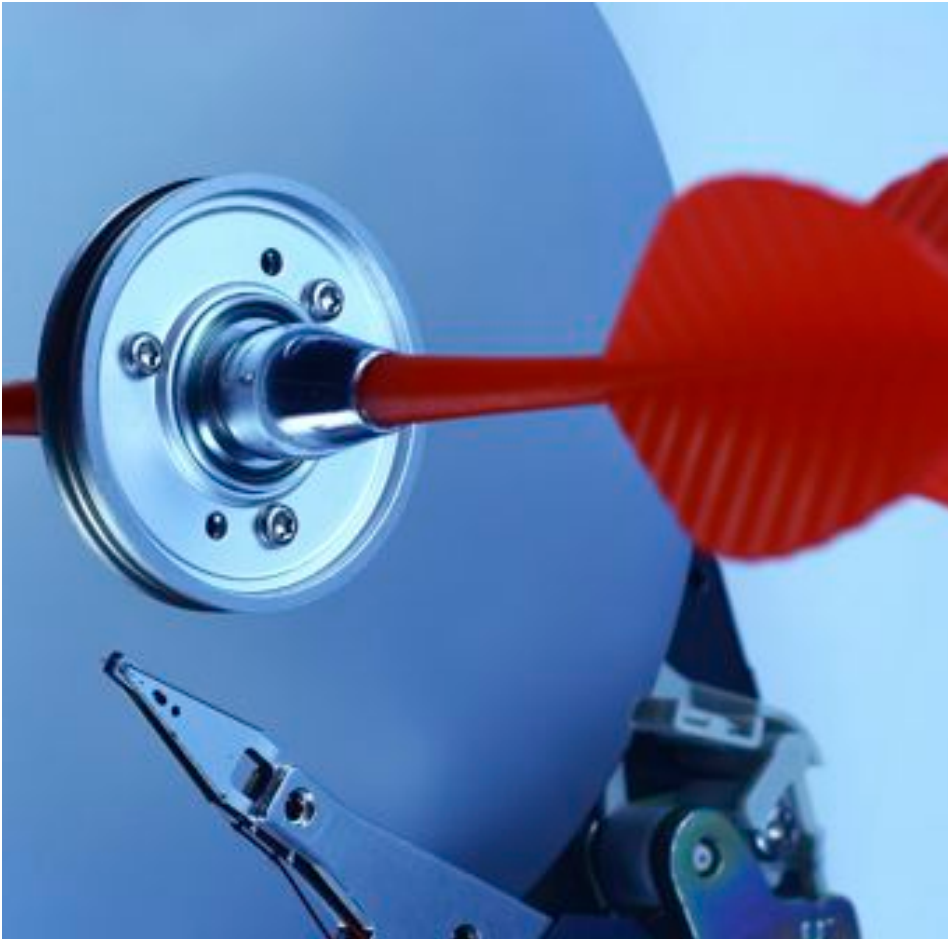
Constellation VCM - comfortable in any environment.

FROM SET TO SUITE, A SINGLE CONTENT MANAGEMENT SOLUTION.

Introducing Constellation VCM	3
Adaptable & Highly Compatible	4
Simple Implementation, Efficient Search Functions	5
Content Management, Export Functionality	6
Monitoring & Security	7
Summary, Quick Facts	8



The Best Production Assistant You Can Hire.



Organize all your assets - film, tape, disc, RAID - in a single, cohesive storage environment.

New & unique, Constellation VCM™

combines both an Enterprise-class Storage Management Solution with a detailed Visual & File/Session Asset Management module- a highly flexible tool that melds seamlessly into your workflow. And, using our PLUGINZ™ technology, Constellation VCM integrates directly with your existing infrastructure, delivering immediate improvements in productivity and the management of your assets.

Developed, proven, perfected.

A professional problem requires a professional tool. Constellation VCM has over 12 years of development behind it, and is now emerging as the

de-facto standard for addressing many of the problems facing the pro video and pro audio marketplace.

Ideal for numerous applications, Constellation VCM supports all asset management requirements (review, search, manipulate), storage, archiving and distribution in both tape-based and tapeless environments. It's highly proficient through the entire production food chain- from on-set capture, DI, video and audio editing.

Having issues with your internal storage infrastructure?

Constellation VCM enables the connection of all storage resources,

including primary SAN storage, near-line storage and tape or optical libraries. It gives you the power to easily connect all silos of storage and create a cohesive repository to directly manage or eShadow™* video files, audio files, projects, supporting documents, emails and beyond.

eShadow™ provides the ability for Constellation users to search, retrieve, copy & manipulate content files without affecting the integrity of the original file. This function can be used even if another process is directly managing the file.

Superior Scalability.

Constellation VCM is anything but a monolithic, “all or nothing” application. Its technology allows you to start small and grow as you see fit. It easily adapts to your increasing workload, managing more and more assets seamlessly within your workflow.

Already Adopted & Adaptable.

Many organizations, from small production companies

to large multi-site international broadcasters, have adopted Constellation VCM as their primary workflow engine. Its power and flexibility are derived from it’s ingenious, proprietary database engine. It allows for ultra-fast searches and easy review, manipulation, comparison and clipping of files using a simple GUI (Graphical User Interface). The same power and speed

is available whether operating in single or multiple locations with remote users around the world - all this power *without* having to touch or modify the original raw high resolution content.

Vast Interoperability.

Constellation VCM is designed to work across every possible acquisition, editing, computer OS and storage platform. This includes:

- HDCAM SR, HDCAM
- XDCAM, XDCAM EX3
- P2
- Red
- Codex
- Final Cut Studio
- Avid
- Pro Tools
- PilotWare
- All SAN, NAS, RAID, JBOD, External Drives
- Xsan
- Unity
- All Tape Drives & Libraries
- Blu-ray & DVD Libraries



Constellation VCM’s Intuitive, simple GUI.

Unlimited Users, Multiple Ingest Points.

Constellation VCM not only innovates asset management, it's software licensing model is equally unique. With the purchase of just a single, universal license, any number of users you designate have access to the system. Immediately ingest, search and retrieve all video files, video projects, audio files or other types of media and data - your users simply require a connection to your environment.

Searching Made Easy.

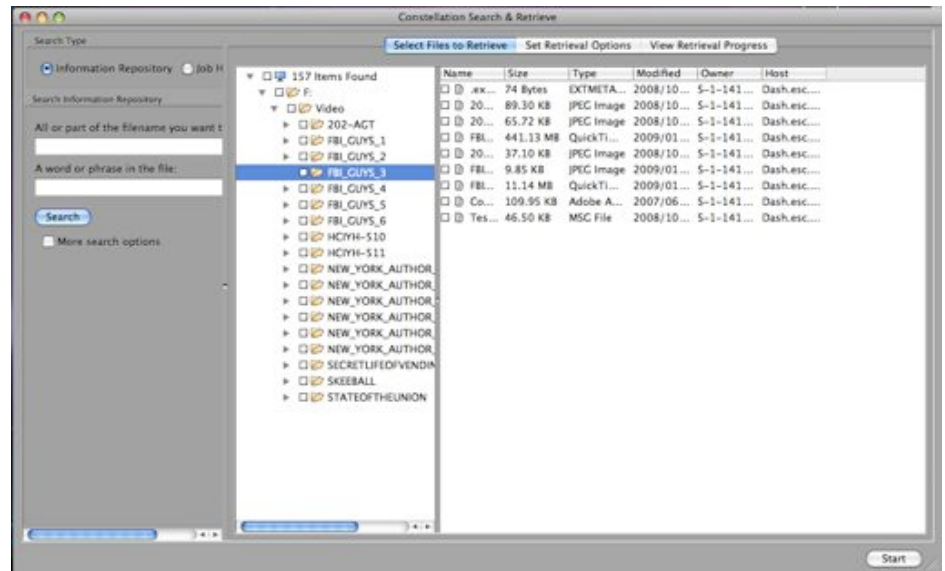
Constellation supports Special Metadata Extraction and Processing that recognizes all categories of metadata, including MXF, AAF and SMPTE time code, scene detection.

Script Files can be read and logging of dialogue can be mapped accurately to SMPTE time code. Closed Captioning can be ingested in and used for marking of dialogue to time code. In addition, Voice Capture can also be used for marking dialogue to time code (future).

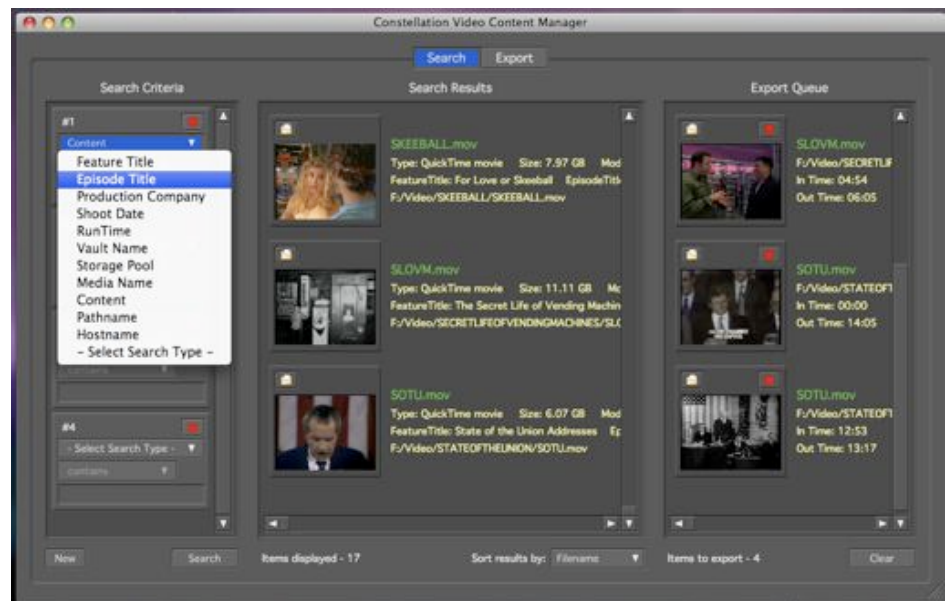
These attributes, which can be as simple as SMPTE time codes or as comprehensive as scene markings and clapper-board information, make it much easier to manage digital video effectively. The metadata can be used in data storage policies that ensure video files are preserved on resources that meet the data's classification, retention longevity, and retrieval performance requirements. As video data is used less frequently, it is moved to less expensive storage, and ultimately, to a tape or disc offline medium.

Visual Search Capabilities.

Constellation presents search results as visual thumbnails, representing the



Simple file session views for complex, structured projects.



Constellation VCM's unique visual interface.

video files that match the search criteria. The thumbnails are derived from a frame within the corresponding digital video file. Selecting a thumbnail file launches a low-resolution version of the corresponding file in a dynamic player. This makes identification and verification of the required video data quick and easy. The thumbnail representation and the low resolution

proxy file are created as video data and ingested into the Information Repository. The Information Repository is an active, dynamic, tiered storage environment. Thumbnails, metadata and proxy files are stored separately from archived files. This provides fast, efficient searches and even keeps off-line data fully search enabled.

CLIP EZ Support™ function.

When a user locates their desired video file, they can activate a media player by clicking on the thumbnail. Multiple viewing windows can be opened to compare and contrast different files. This window enables the user to define the exact time code and set desired frame accurate “IN” and “OUT” points.

If the video asset has associated files as part of its collection (e.g. script files, screen shots, notes, emails), these can be reviewed and selected using the same viewing window. Only the selected I/O clip and associated files will be retrieved from the repository. The repository can include any media sources connected to the system- solid state, spinning disk, optical disc or data media tape*.

**When extracting clips from data media tape, only the requested clip is restored from tape, not the entire tape.*

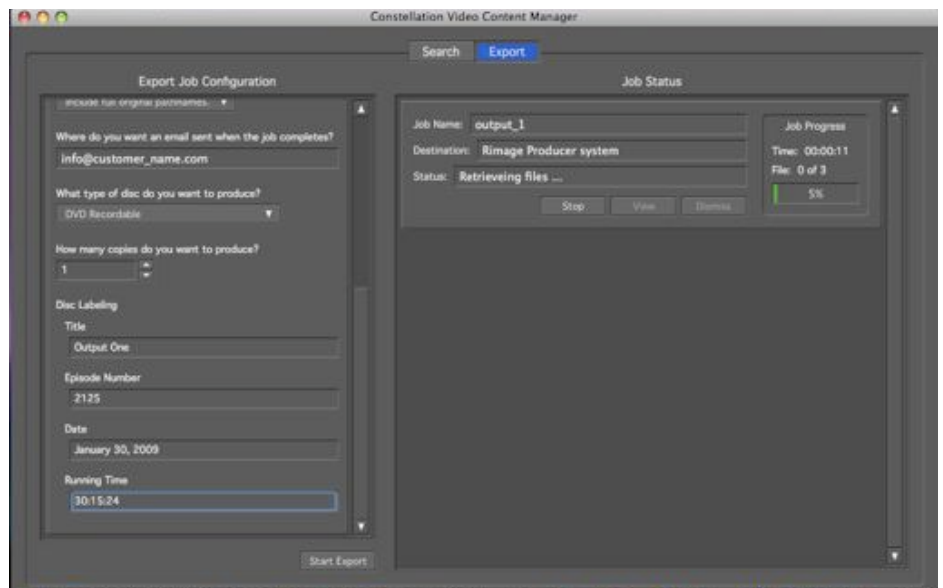
Open Export.

Constellation VCM makes exporting projects, video and audio files easy and painless. All desired files are placed in an export queue; the interface then guides users through the process moving the assets back to any of the following destinations: on-line primary storage environment for editing, separate network location, on-line digital transfer system, transcoding system or optical disc publishing system.

The Information Repository is the heart of Constellation VCM and seamlessly serves secondary storage requirements. Instead of managing separate storage solutions for primary files, backup files, regulatory files, archives and others, Constellation presents a suite of mixed storage

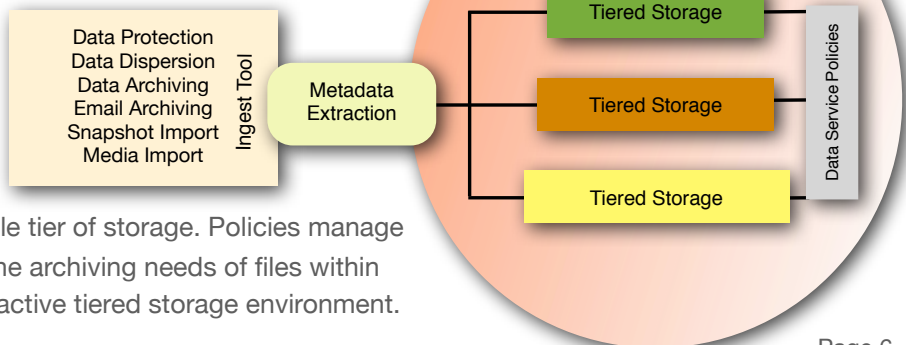


CLIP EZ SUPPORT™ features multiple video views.



Simple Export functionality to any destination.

resources as a total ‘federated information repository’ deployed as a

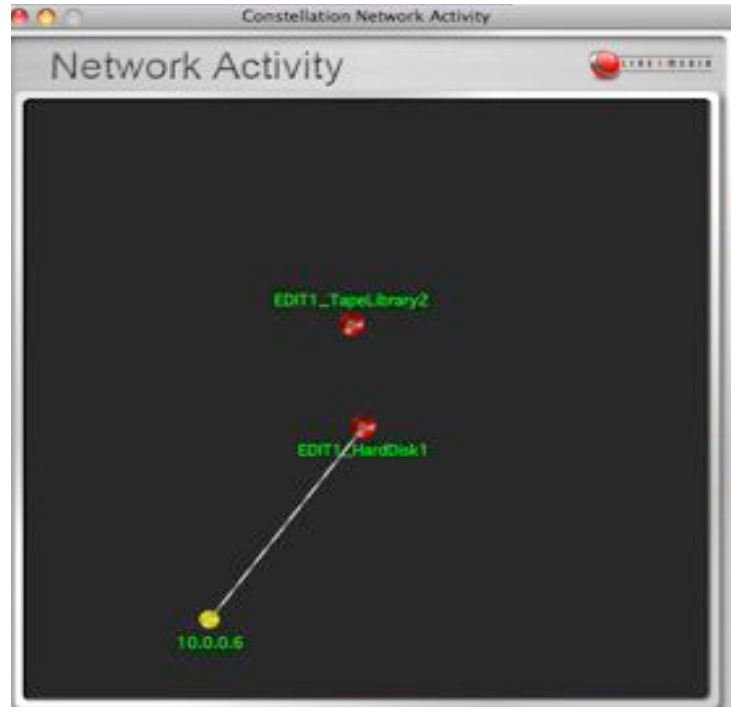


single tier of storage. Policies manage all the archiving needs of files within the active tiered storage environment.

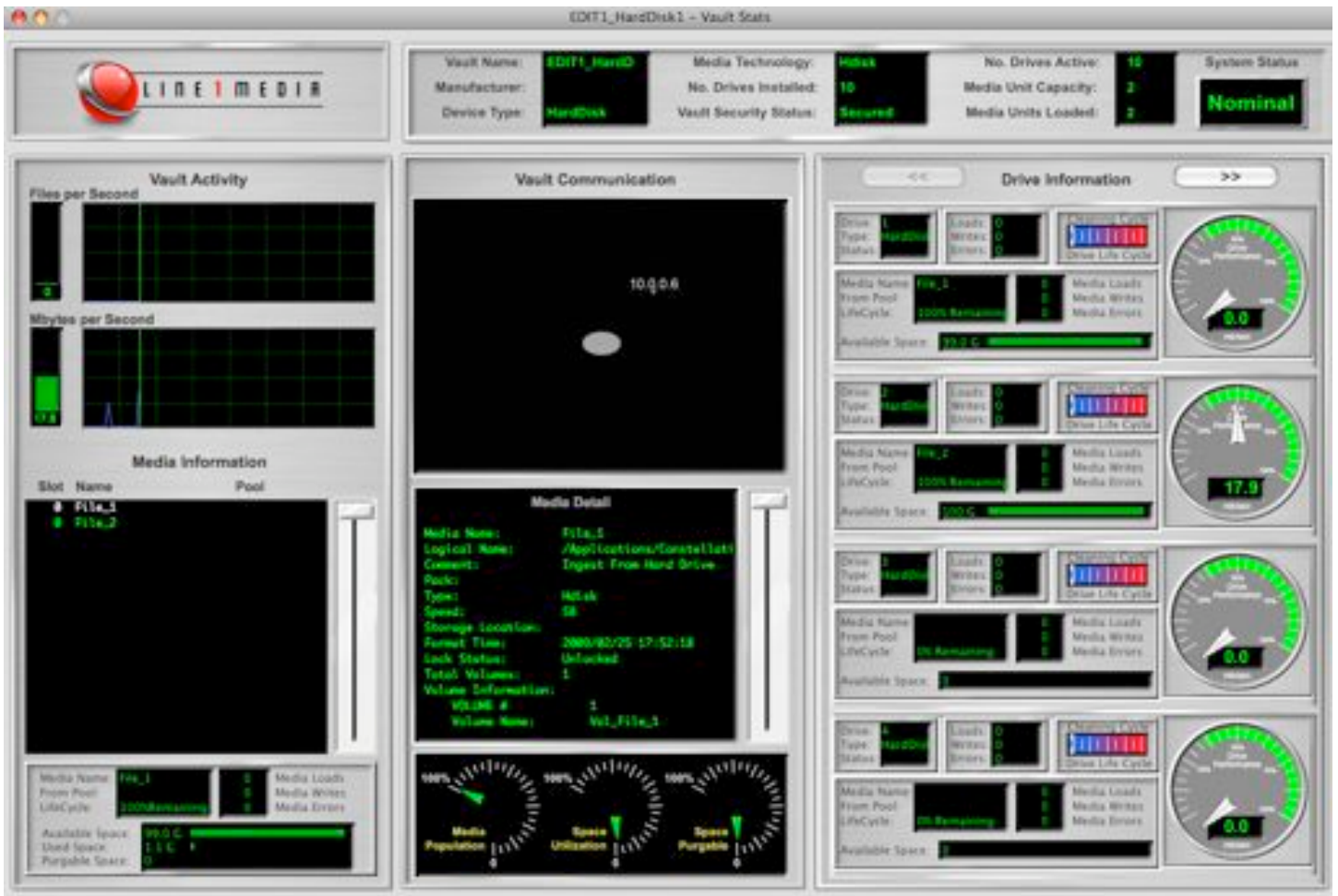
Monitor, Manage, Secure.

Security and integrity are a major concern when working with video and production assets. Constellation VCM offers protection, from the vault level through asset level, and even down to the physical media drive. If a user does not have access privileges to any of the five levels of security, the asset is not available to them - it's as if it does not exist.

In addition to security and access, a complete log is kept, available to the administrator, of all user activity. Any time the original high resolution footage is touched, the requesting user, date, time and type of request is recorded.



Constellation VCM employs a comprehensive dashboard to continually monitor activity & performance.



<p>Store & Archive Video Projects</p> <ul style="list-style-type: none"> - Include all supporting data files - Emails, Screen Shots, Production Notes - Archive them as part of the collection 	<p>Create a Federated Information Repository</p> <ul style="list-style-type: none"> - Connect Islands of Storage together - Connect Remote Offices together - Create a Fluid Storage Environment
<p>Create a searchable digital archive</p> <ul style="list-style-type: none"> - Create multiple Ingest Points - Extract Metadata automatically - Easy Logging Input - Create an MXF aware data tape or optical disc library without the MXF requirements 	<p>Implement Powerful Security Tools</p> <ul style="list-style-type: none"> - Track Content Use - Implement Security Policies (down to media level) - Create Log & Reporting Functions for Content Access & Use
<p>Store & Archive Audio Projects</p> <ul style="list-style-type: none"> - Search and review on Pro Tools & other audio edit sessions - File/Session View provides view into audio structure - Adds all other supporting files as part of collection - Store and Archive Incremental Changes and Updates to Pro Tools Sessions 	<p>Provide a powerful search tool for any project</p> <ul style="list-style-type: none"> - Simple Interface that is Easy To Use - Visually search on projects using any metadata or spoken word - Custom Design Metadata Searches by organization, department or user - Review all material anywhere in the world - Intelligent Search Capability to drill down to time code specific search
<p>Archive on-set in conjunction w/ tapeless workflows</p> <ul style="list-style-type: none"> - Automatically and 100% accurately - Automatically to multiple hard drives, LTO tape & Blu-ray - Assures integrity of files and file structure 	<p>Create, Multiple Simultaneous Export Functions</p> <ul style="list-style-type: none"> - Digital Delivery - CD / DVD / Blu-ray - Data Media Tape - Pro Video Tape
<p>Control Your Storage Growth</p> <ul style="list-style-type: none"> - Automatically migrate projects from Final Cut Pro or Avid environments to 2nd Tier Storage, Near-Line/Off-Line Archive - Automatically manage migration from primary edit environment to Near-Line, Near-Line Archive Storage - Manage content across multiple locations globally 	<p>Management</p> <ul style="list-style-type: none"> - Enables corporate, departmental & unique user - policy management - Migrates Files & Projects from Primary to Secondary to Archive - Connect to your back-end workflow infrastructure
<p>Constellation Server eShadow™</p> <ul style="list-style-type: none"> - Indexes all SAN & NAS Islands - Provides a complete search & management solution for all environments - Operates in pre-existing Fibre Channel, iSCSI, Ethernet, Gigabit Ethernet 	<p>Platform Support</p> <ul style="list-style-type: none"> - Supports Windows 2000, 2003, XP, Vista, OS-X, Linux, Unix - Operates with Avid, Avid Unity, xSAN - Operates with all SAN, NAS & RAID Storage - Operates with Tape Libraries (LTO-3/4, SAIT, AIT) - Operates with Rimage